



Documentation project

OAK_EMUF

V2_10

Issue: customer

| | | | | | |
|----|-----------------------------|----------|--------------|-------|----|
| 1 | partlist | 08.04.02 | OAK_EMUF.lst | V2_10 | FG |
| 17 | schematic | 08.04.02 | OAK_EMUF.p2 | V2_10 | FG |
| * | tin mask component side | | | V2_10 | |
| 29 | mounting map component side | 08.04.02 | OAK_EMUF.plc | V2_10 | FG |
| * | design component side | | | V2_10 | |
| * | solder mask component side | | | V2_10 | |
| * | PCB Dimension | | | V2_10 | |
| * | PCB component side | | | V2_10 | |
| * | PCB Layer 2 | | | V2_10 | |
| * | PCB Layer 3 | | | V2_10 | |
| * | PCB Layer 4 | | | V2_10 | |
| * | PCB Layer 5 | | | V2_10 | |
| * | PCB Layer 6 | | | V2_10 | |
| * | PCB Layer 7 | | | V2_10 | |
| * | PCB Layer 8 | | | V2_10 | |
| * | PCB Layer 9 | | | V2_10 | |
| * | PCB solder side | | | V2_10 | |
| * | solder mask solder side | | | V2_10 | |
| 30 | mounting map solder side | 08.04.02 | OAK_EMUF.pls | V2_10 | FG |
| * | design solder side | | | V2_10 | |
| * | tin mask solder side | | | V2_10 | |
| * | test point solder side | | | V2_10 | |
| * | test point solder side | | | V2_10 | |
| * | test | | | V0_99 | |
| 31 | versions | | version.txt | | |
| * | Quad component side | | | V2_10 | |
| * | Quad solder side | | | V2_10 | |
| * | tips and tricks | | | V2_10 | |
| * | manufacturing instructions | | | V2_10 | |
| * | notes | | | | |

* if required, these chapters can be ordered additionally

FG=final version EW=in development, this chapter can still be changed

printed on: 08.04.2002

| | | | | |
|---------------------|-----|-------|--------------------------|-------|
| Revision necessary: | yes | no | Corrected / new version: | |
| Name: | | Date: | Name: | Date: |

I:\PJ\OAK_EMUF\PART\V2_10\

| Part No. | QTY | Part Description | Material | Value | Unit | Notes |
|----------|-----|------------------|-----------------|-------|--------|----------|
| BAT1 | 1 | BAT-99998-000 | BS --- Batterie | 3V | 950mAh | Li thium |
| B01 | 1 | STB-99553-000 | BS --- Buchse | 9pol. | | D-Sub |
| C1 | 1 | KKE-99736-000 | LS SMD Kerko | 100nF | 20% | 50VDC |
| C2 | 1 | KKE-99736-000 | BS SMD Kerko | 100nF | 20% | 50VDC |
| C3 | 1 | KKE-99736-000 | BS SMD Kerko | 100nF | 20% | 50VDC |
| C4 | 1 | KEL-99803-000 | BS SMD Elko | 100u | +20% | 50V |
| C5 | 1 | KTL-99886-000 | BS SMD Tantal | 100nF | 20% | 10V |
| C6 | 1 | KEL-99803-000 | BS SMD Elko | 100u | +20% | 50V |
| C7 | 1 | KKE-99736-000 | BS SMD Kerko | 100nF | 20% | 50VDC |
| C8 | 1 | KKE-99736-000 | BS SMD Kerko | 100nF | 20% | 50VDC |
| C34 | 1 | KKE-99736-000 | BS SMD Kerko | 100nF | 20% | 50VDC |
| C59 | 1 | KKE-99736-000 | BS SMD Kerko | 100nF | 20% | 50VDC |
| C60 | 1 | KKE-99736-000 | BS SMD Kerko | 100nF | 20% | 50VDC |
| C61 | 1 | KKE-99736-000 | BS SMD Kerko | 100nF | 20% | 50VDC |
| C62 | 1 | KKE-99736-000 | BS SMD Kerko | 100nF | 20% | 50VDC |
| C63 | 1 | KKE-99736-000 | BS SMD Kerko | 100nF | 20% | 50VDC |
| C64 | 1 | KKE-99736-000 | BS SMD Kerko | 100nF | 20% | 50VDC |
| C65 | 1 | KKE-99736-000 | BS SMD Kerko | 100nF | 20% | 50VDC |
| C66 | 1 | KKE-99736-000 | BS SMD Kerko | 100nF | 20% | 50VDC |
| C67 | 1 | KKE-99736-000 | BS SMD Kerko | 100nF | 20% | 50VDC |
| C68 | 1 | KKE-99736-000 | BS SMD Kerko | 100nF | 20% | 50VDC |
| C69 | 1 | KKE-99736-000 | BS SMD Kerko | 100nF | 20% | 50VDC |
| C70 | 1 | KKE-99736-000 | BS SMD Kerko | 100nF | 20% | 50VDC |
| C71 | 1 | KKE-99736-000 | BS SMD Kerko | 100nF | 20% | 50VDC |
| C72 | 1 | KKE-99736-000 | BS SMD Kerko | 100nF | 20% | 50VDC |
| C73 | 1 | KKE-99736-000 | BS SMD Kerko | 100nF | 20% | 50VDC |
| C74 | 1 | KKE-99736-000 | BS SMD Kerko | 100nF | 20% | 50VDC |
| C75 | 1 | KKE-99736-000 | BS SMD Kerko | 100nF | 20% | 50VDC |
| C76 | 1 | KKE-99736-000 | BS SMD Kerko | 100nF | 20% | 50VDC |
| C77 | 1 | KKE-99736-000 | BS SMD Kerko | 100nF | 20% | 50VDC |

| | | | | | | | | | | | |
|------|---|-----|---------------|----|-----|--------|-------|-------|-----|-------|-----|
| C78 | 1 | St. | KKE-99736-000 | BS | SMD | Kerko | 0805 | 100nF | 20% | 50VDC | Z5U |
| C79 | 1 | St. | KKE-99736-000 | BS | SMD | Kerko | 0805 | 100nF | 20% | 50VDC | Z5U |
| C80 | 1 | St. | KKE-99736-000 | BS | SMD | Kerko | 0805 | 100nF | 20% | 50VDC | Z5U |
| C81 | 1 | St. | KKE-99736-000 | BS | SMD | Kerko | 0805 | 100nF | 20% | 50VDC | Z5U |
| C82 | 1 | St. | KKE-99736-000 | BS | SMD | Kerko | 0805 | 100nF | 20% | 50VDC | Z5U |
| C83 | 1 | St. | KKE-99736-000 | BS | SMD | Kerko | 0805 | 100nF | 20% | 50VDC | Z5U |
| C84 | 1 | St. | KKE-99736-000 | BS | SMD | Kerko | 0805 | 100nF | 20% | 50VDC | Z5U |
| C85 | 1 | St. | KKE-99736-000 | BS | SMD | Kerko | 0805 | 100nF | 20% | 50VDC | Z5U |
| C86 | 1 | St. | KKE-99736-000 | BS | SMD | Kerko | 0805 | 100nF | 20% | 50VDC | Z5U |
| C87 | 1 | St. | KKE-99736-000 | BS | SMD | Kerko | 0805 | 100nF | 20% | 50VDC | Z5U |
| C88 | 1 | St. | KKE-99736-000 | BS | SMD | Kerko | 0805 | 100nF | 20% | 50VDC | Z5U |
| C89 | 1 | St. | KKE-99736-000 | BS | SMD | Kerko | 0805 | 100nF | 20% | 50VDC | Z5U |
| C101 | 1 | St. | KKE-99805-000 | LS | SMD | Kerko | 0805 | 33pF | 5% | 50VDC | COG |
| C102 | 1 | St. | KKE-99805-000 | LS | SMD | Kerko | 0805 | 33pF | 5% | 50VDC | COG |
| C103 | 1 | St. | KKE-99717-000 | LS | SMD | Kerko | 0805 | 4.7nF | 10% | 50VDC | X7R |
| C201 | 1 | St. | KKE-99805-000 | LS | SMD | Kerko | 0805 | 33pF | 5% | 50VDC | COG |
| C202 | 1 | St. | KKE-99805-000 | LS | SMD | Kerko | 0805 | 33pF | 5% | 50VDC | COG |
| C203 | 1 | St. | KTL-99909-000 | BS | SMD | Tantal | ETC-C | 10uF | 20% | 10V | |
| C300 | 1 | St. | KKE-99736-000 | LS | SMD | Kerko | 0805 | 100nF | 20% | 50VDC | Z5U |
| C303 | 1 | St. | KKE-99736-000 | LS | SMD | Kerko | 0805 | 100nF | 20% | 50VDC | Z5U |
| C304 | 1 | St. | KKE-99736-000 | LS | SMD | Kerko | 0805 | 100nF | 20% | 50VDC | Z5U |
| C305 | 1 | St. | KKE-99736-000 | LS | SMD | Kerko | 0805 | 100nF | 20% | 50VDC | Z5U |
| C306 | 1 | St. | KKE-99736-000 | LS | SMD | Kerko | 0805 | 100nF | 20% | 50VDC | Z5U |
| C307 | 1 | St. | KKE-99736-000 | LS | SMD | Kerko | 0805 | 100nF | 20% | 50VDC | Z5U |
| C308 | 1 | St. | KKE-99736-000 | LS | SMD | Kerko | 0805 | 100nF | 20% | 50VDC | Z5U |
| C309 | 1 | St. | KTL-99865-000 | BS | SMD | Tantal | ETC-E | 470uF | | 6V | |
| C310 | 1 | St. | KTL-99866-000 | BS | SMD | Tantal | ETC-E | 330uF | | 10V | |
| C311 | 1 | St. | KTL-99921-000 | LS | SMD | Tantal | ETC-B | 3.3uF | 20% | 16V | |
| C312 | 1 | St. | KKE-99805-000 | BS | SMD | Kerko | 0805 | 33pF | 5% | 50VDC | COG |
| C313 | 1 | St. | KKE-99805-000 | BS | SMD | Kerko | 0805 | 33pF | 5% | 50VDC | COG |

| | | | | | | | | | | | | |
|-----|-------|---|-----|---------------|----|-----|-------|------|-------|-----|-------|-----|
| --- | CB101 | 1 | St. | KKE-99736-000 | LS | SMD | Kerko | 0805 | 100nF | 20% | 50VDC | Z5U |
| --- | CB102 | 1 | St. | KKE-99736-000 | LS | SMD | Kerko | 0805 | 100nF | 20% | 50VDC | Z5U |
| --- | CB103 | 1 | St. | KKE-99736-000 | BS | SMD | Kerko | 0805 | 100nF | 20% | 50VDC | Z5U |
| --- | CB104 | 1 | St. | KKE-99736-000 | BS | SMD | Kerko | 0805 | 100nF | 20% | 50VDC | Z5U |
| --- | CB105 | 1 | St. | KKE-99736-000 | LS | SMD | Kerko | 0805 | 100nF | 20% | 50VDC | Z5U |
| --- | CB106 | 1 | St. | KKE-99736-000 | BS | SMD | Kerko | 0805 | 100nF | 20% | 50VDC | Z5U |
| --- | CB107 | 1 | St. | KKE-99736-000 | LS | SMD | Kerko | 0805 | 100nF | 20% | 50VDC | Z5U |
| --- | CB108 | 1 | St. | KKE-99736-000 | BS | SMD | Kerko | 0805 | 100nF | 20% | 50VDC | Z5U |
| --- | CB109 | 1 | St. | KKE-99736-000 | BS | SMD | Kerko | 0805 | 100nF | 20% | 50VDC | Z5U |
| --- | CB110 | 1 | St. | KKE-99736-000 | BS | SMD | Kerko | 0805 | 100nF | 20% | 50VDC | Z5U |
| --- | CB111 | 1 | St. | KKE-99736-000 | BS | SMD | Kerko | 0805 | 100nF | 20% | 50VDC | Z5U |
| --- | CB112 | 1 | St. | KKE-99736-000 | BS | SMD | Kerko | 0805 | 100nF | 20% | 50VDC | Z5U |
| --- | CB113 | 1 | St. | KKE-99736-000 | BS | SMD | Kerko | 0805 | 100nF | 20% | 50VDC | Z5U |
| --- | CB114 | 1 | St. | KKE-99736-000 | BS | SMD | Kerko | 0805 | 100nF | 20% | 50VDC | Z5U |
| --- | CB115 | 1 | St. | KKE-99736-000 | BS | SMD | Kerko | 0805 | 100nF | 20% | 50VDC | Z5U |
| --- | CB116 | 1 | St. | KKE-99736-000 | BS | SMD | Kerko | 0805 | 100nF | 20% | 50VDC | Z5U |
| --- | CB117 | 1 | St. | KKE-99736-000 | BS | SMD | Kerko | 0805 | 100nF | 20% | 50VDC | Z5U |
| --- | CB118 | 1 | St. | KKE-99736-000 | LS | SMD | Kerko | 0805 | 100nF | 20% | 50VDC | Z5U |
| --- | CB119 | 1 | St. | KKE-99736-000 | LS | SMD | Kerko | 0805 | 100nF | 20% | 50VDC | Z5U |
| --- | CB121 | 1 | St. | KKE-99736-000 | LS | SMD | Kerko | 0805 | 100nF | 20% | 50VDC | Z5U |
| --- | CB123 | 1 | St. | KKE-99736-000 | LS | SMD | Kerko | 0805 | 100nF | 20% | 50VDC | Z5U |
| --- | CB125 | 1 | St. | KKE-99736-000 | BS | SMD | Kerko | 0805 | 100nF | 20% | 50VDC | Z5U |
| --- | CB127 | 1 | St. | KKE-99736-000 | LS | SMD | Kerko | 0805 | 100nF | 20% | 50VDC | Z5U |
| --- | CB128 | 1 | St. | KKE-99736-000 | LS | SMD | Kerko | 0805 | 100nF | 20% | 50VDC | Z5U |
| --- | CB129 | 1 | St. | KKE-99736-000 | LS | SMD | Kerko | 0805 | 100nF | 20% | 50VDC | Z5U |
| --- | CB131 | 1 | St. | KKE-99736-000 | LS | SMD | Kerko | 0805 | 100nF | 20% | 50VDC | Z5U |
| --- | CB134 | 1 | St. | KKE-99736-000 | LS | SMD | Kerko | 0805 | 100nF | 20% | 50VDC | Z5U |
| --- | CB135 | 1 | St. | KKE-99736-000 | LS | SMD | Kerko | 0805 | 100nF | 20% | 50VDC | Z5U |
| --- | CB136 | 1 | St. | KKE-99736-000 | LS | SMD | Kerko | 0805 | 100nF | 20% | 50VDC | Z5U |
| --- | CB140 | 1 | St. | KKE-99736-000 | LS | SMD | Kerko | 0805 | 100nF | 20% | 50VDC | Z5U |

| | | | | | | | | | | | | |
|-----|--------|---|-----|---------------|----|-----|---------------|-----------|-------|------|------------|----------|
| --- | CB141 | 1 | St. | KKE-99736-000 | LS | SMD | Kerko | 0805 | 100nF | 20% | 50VDC | Z5U |
| --- | CB142 | 1 | St. | KKE-99736-000 | LS | SMD | Kerko | 0805 | 100nF | 20% | 50VDC | Z5U |
| --- | CB143 | 1 | St. | KKE-99736-000 | LS | SMD | Kerko | 0805 | 100nF | 20% | 50VDC | Z5U |
| --- | CB201 | 1 | St. | KKE-99736-000 | BS | SMD | Kerko | 0805 | 100nF | 20% | 50VDC | Z5U |
| --- | CB202 | 1 | St. | KKE-99736-000 | BS | SMD | Kerko | 0805 | 100nF | 20% | 50VDC | Z5U |
| --- | CB203 | 1 | St. | KKE-99736-000 | BS | SMD | Kerko | 0805 | 100nF | 20% | 50VDC | Z5U |
| --- | CB204 | 1 | St. | KKE-99736-000 | BS | SMD | Kerko | 0805 | 100nF | 20% | 50VDC | Z5U |
| --- | CB205 | 1 | St. | KKE-99736-000 | LS | SMD | Kerko | 0805 | 100nF | 20% | 50VDC | Z5U |
| --- | CB206 | 1 | St. | KKE-99736-000 | LS | SMD | Kerko | 0805 | 100nF | 20% | 50VDC | Z5U |
| --- | CB207 | 1 | St. | KKE-99736-000 | LS | SMD | Kerko | 0805 | 100nF | 20% | 50VDC | Z5U |
| --- | CB208 | 1 | St. | KKE-99736-000 | LS | SMD | Kerko | 0805 | 100nF | 20% | 50VDC | Z5U |
| --- | CB209 | 1 | St. | KKE-99736-000 | BS | SMD | Kerko | 0805 | 100nF | 20% | 50VDC | Z5U |
| --- | CB210 | 1 | St. | KKE-99736-000 | LS | SMD | Kerko | 0805 | 100nF | 20% | 50VDC | Z5U |
| --- | CB211 | 1 | St. | KKE-99736-000 | LS | SMD | Kerko | 0805 | 100nF | 20% | 50VDC | Z5U |
| --- | CB212 | 1 | St. | KKE-99736-000 | LS | SMD | Kerko | 0805 | 100nF | 20% | 50VDC | Z5U |
| --- | CB213 | 1 | St. | KKE-99736-000 | LS | SMD | Kerko | 0805 | 100nF | 20% | 50VDC | Z5U |
| --- | CB214 | 1 | St. | KKE-99736-000 | LS | SMD | Kerko | 0805 | 100nF | 20% | 50VDC | Z5U |
| --- | CB301 | 1 | St. | KKE-99736-000 | LS | SMD | Kerko | 0805 | 100nF | 20% | 50VDC | Z5U |
| --- | CB302 | 1 | St. | KKE-99736-000 | LS | SMD | Kerko | 0805 | 100nF | 20% | 50VDC | Z5U |
| --- | CB303 | 1 | St. | KKE-99736-000 | LS | SMD | Kerko | 0805 | 100nF | 20% | 50VDC | Z5U |
| --- | CB304 | 1 | St. | KKE-99736-000 | LS | SMD | Kerko | 0805 | 100nF | 20% | 50VDC | Z5U |
| --- | CB306 | 1 | St. | KKE-99736-000 | LS | SMD | Kerko | 0805 | 100nF | 20% | 50VDC | Z5U |
| --- | CB307 | 1 | St. | KKE-99736-000 | LS | SMD | Kerko | 0805 | 100nF | 20% | 50VDC | Z5U |
| --- | CB308 | 1 | St. | KKE-99736-000 | LS | SMD | Kerko | 0805 | 100nF | 20% | 50VDC | Z5U |
| --- | CB1001 | 1 | St. | KKE-99605-000 | LS | SMD | Kerko | 0805 | 100nF | +10% | 50V | X7R |
| --- | CB1002 | 1 | St. | KKE-99605-000 | LS | SMD | Kerko | 0805 | 100nF | +10% | 50V | X7R |
| --- | D1 | 1 | St. | DSK-99982-000 | BS | SMD | Schottky-Dio. | LLBAT42 | 30V | 50mA | | 200mW |
| --- | D201 | 1 | St. | LED-99942-000 | BS | SMD | LED | HSMH-T400 | rot | 30mA | 17mcd/10mA | SMD/klar |
| --- | D202 | 1 | St. | LED-99942-000 | BS | SMD | LED | HSMH-T400 | rot | 30mA | 17mcd/10mA | SMD/klar |
| --- | D203 | 1 | St. | LED-99942-000 | BS | SMD | LED | HSMH-T400 | rot | 30mA | 17mcd/10mA | SMD/klar |

| | | | | | | | | | | |
|-------|-------|---------------|----|-----|---------------|-----------------|-----------|----------|------------|-----------------|
| D302 | 1 St. | DSP-99970-000 | LS | SMD | Sup., -Diode | SM6T36C | 36V | 600W | + -10% | 5uA |
| D303 | 1 St. | DSK-99971-000 | LS | SMD | Schottky-Dio. | MBS340T3 | 40V | 3A | | |
| D304 | 1 St. | DSK-99971-000 | LS | SMD | Schottky-Dio. | MBS340T3 | 40V | 3A | | |
| D305 | 1 St. | LED-99942-000 | BS | SMD | LED | HSMH-T400 | rot | 30mA | 17mcd/10mA | SMD/klar |
| D306 | 1 St. | LED-99942-000 | BS | SMD | LED | HSMH-T400 | rot | 30mA | 17mcd/10mA | SMD/klar |
| D307 | 1 St. | DSK-99982-000 | BS | SMD | Schottky-Dio. | LLBAT42 | 30V | 50mA | | 200mW |
| D308 | 1 St. | DSK-99982-000 | BS | SMD | Schottky-Dio. | LLBAT42 | 30V | 50mA | | 200mW |
| FP1 | 1 St. | GFT-0000K-000 | BS | --- | | | | | | |
| IC1 | 1 St. | ICQ-99761-000 | LS | SMD | IC | Quarzosz. | 4.9152MHz | | | + -100ppm |
| IC2 | 1 St. | ICI-99941-000 | LS | SMD | IC | PCA82C251 | | | | |
| IC3 | 1 St. | ICI-99941-000 | LS | SMD | IC | PCA82C251 | | | | |
| IC4 | 1 St. | ICR-99833-000 | BS | SMD | IC | LT1076CQ | 45V | 64V | | |
| IC5 | 1 St. | ICR-99833-000 | BS | SMD | IC | LT1076CQ | 45V | 64V | | |
| IC6 | 1 St. | ICE-99848-000 | BS | SMD | IC | X25256 | | | | |
| IC7 | 1 St. | ICQ-99774-000 | BS | SMD | IC | Quarzosz. | 1.8432MHz | | | + -100ppm |
| IC100 | 1 St. | ICE-99847-000 | BS | SMD | IC | U634H256 | | | | |
| IC101 | 1 St. | ICM-99918-000 | BS | SMD | IC | MPC555LF?2P40 | | | | |
| IC102 | 1 St. | ICE-99852-000 | LS | SMD | IC | AM29LV160D?-??> | CMOS | +3V | | |
| IC103 | 1 St. | ICE-99852-000 | BS | SMD | IC | AM29LV160D?-??> | CMOS | +3V | | |
| IC104 | 1 St. | ICE-99851-000 | BS | SMD | IC | K7B163625?-Q (> | | | | K7B163625M-QC85 |
| IC105 | 1 St. | ICE-99851-000 | LS | SMD | IC | K7B163625?-Q (> | | | | K7B163625M-QC85 |
| IC106 | 1 St. | ICD-99201-000 | BS | SMD | IC | 74LV244D | | | | |
| IC201 | 1 St. | ICD-99203-000 | BS | SMD | IC | 74FCT164245TPV | | | | |
| IC202 | 1 St. | ICD-99203-000 | BS | SMD | IC | 74FCT164245TPV | | | | |
| IC203 | 1 St. | ICE-99915-000 | BS | SMD | IC | 93C46 | CMOS | | | 75/2000mA |
| IC204 | 1 St. | ICI-99917-000 | LS | SMD | IC | LAN91C96 | | | | |
| IC205 | 1 St. | ICD-99092-000 | BS | SMD | IC | 74AHC05 | | | | |
| IC206 | 1 St. | ICD-99203-000 | BS | SMD | IC | 74FCT164245TPV | | | | |
| IC207 | 1 St. | ICD-99456-000 | LS | SMD | IC | 74HCL38 | CMOS | +2...+6V | | |
| IC208 | 1 St. | ICD-99112-000 | BS | SMD | IC | TPS3307-33D | | | | 2-6V |

| | | | | | | | | | | | |
|-----|-------|---|-----|---------------|----|-----|-------------------------|-----------------|---------|------------|----------------|
| --- | L101 | 1 | St. | DRO-99907-000 | LS | SMD | Drossel HF | 100uH | 65mA | 20 | |
| --- | L301 | 1 | St. | DRO-99798-000 | BS | SMD | Drossel Speich. CDRH125 | 22uH | 2200mA | 0.07R | |
| --- | L302 | 1 | St. | DRO-99798-000 | BS | SMD | Drossel Speich. CDRH125 | 22uH | 2200mA | 0.07R | |
| --- | LJ1 | 1 | St. | XLJ-99710-000 | LS | --- | fikt.Bauteil | Lötjumper | 2x2pol. | | |
| --- | LJ2 | 1 | St. | XLJ-99742-000 | LS | --- | fikt.Bauteil | Lötjumper | 1x2pol. | | |
| --- | LJ3 | 1 | St. | XLJ-99710-000 | LS | --- | fikt.Bauteil | Lötjumper | 2x2pol. | | |
| --- | LJ4 | 1 | St. | XLJ-99710-000 | BS | --- | fikt.Bauteil | Lötjumper | 2x2pol. | | 5 u. 6 brücken |
| --- | LJ5 | 1 | St. | XLJ-99710-000 | LS | --- | fikt.Bauteil | Lötjumper | 2x2pol. | | |
| --- | LJ6 | 1 | St. | XLJ-99710-000 | LS | --- | fikt.Bauteil | Lötjumper | 2x2pol. | | |
| --- | LJ7 | 1 | St. | XLJ-99710-000 | LS | --- | fikt.Bauteil | Lötjumper | 2x2pol. | | |
| --- | LJ8 | 1 | St. | XLJ-99742-000 | LS | --- | fikt.Bauteil | Lötjumper | 1x2pol. | | brücken |
| --- | LJ9 | 1 | St. | XLJ-99742-000 | LS | --- | fikt.Bauteil | Lötjumper | 1x2pol. | | |
| --- | LJ10 | 1 | St. | XLJ-99742-000 | LS | --- | fikt.Bauteil | Lötjumper | 1x2pol. | | |
| --- | LJ11 | 1 | St. | XLJ-99742-000 | LS | --- | fikt.Bauteil | Lötjumper | 1x2pol. | | |
| --- | LJ12 | 1 | St. | XLJ-99742-000 | LS | --- | fikt.Bauteil | Lötjumper | 1x2pol. | | |
| --- | LJ13 | 1 | St. | XLJ-99742-000 | LS | --- | fikt.Bauteil | Lötjumper | 1x2pol. | | |
| --- | LJ14 | 1 | St. | XLJ-99742-000 | LS | --- | fikt.Bauteil | Lötjumper | 1x2pol. | | |
| --- | LJ15 | 1 | St. | XLJ-99742-000 | LS | --- | fikt.Bauteil | Lötjumper | 1x2pol. | | |
| --- | LJ16 | 1 | St. | XLJ-99742-000 | LS | --- | fikt.Bauteil | Lötjumper | 1x2pol. | | |
| --- | LJ17 | 1 | St. | XLJ-99742-000 | LS | --- | fikt.Bauteil | Lötjumper | 1x2pol. | | |
| --- | MA_BS | 1 | St. | XKO-99997-000 | BS | --- | fikt.Baut. | Marke für Best> | | | |
| --- | MA_LS | 1 | St. | XKO-99997-000 | LS | --- | fikt.Baut. | Marke für Best> | | | |
| --- | PLJ | 1 | St. | PLJ-97444-000 | LS | --- | LP | 2.10 | 10L FR4 | 1.5mm 35um | 2x |
| --- | R1 | 1 | St. | XLJ-99742-000 | LS | --- | fikt.Bauteil | Lötjumper | 1x2pol. | | |
| --- | R2 | 1 | St. | XLJ-99742-000 | LS | --- | fikt.Bauteil | Lötjumper | 1x2pol. | | |
| --- | R3 | 1 | St. | WDM-98980-000 | LS | SMD | Met.Wid. | 0805 | 1% | 0.125W | 200V |
| --- | R4 | 1 | St. | WDM-99010-000 | LS | SMD | Met.Wid. | 0805 | 1% | 0.125W | 200V |
| --- | R5 | 1 | St. | WDM-98948-000 | LS | SMD | Met.Wid. | 0805 | 1% | 0.125W | 200V |
| --- | R6 | 1 | St. | WDM-99010-000 | LS | SMD | Met.Wid. | 0805 | 1% | 0.125W | 200V |
| --- | R7 | 1 | St. | WDM-98948-000 | LS | SMD | Met.Wid. | 0805 | 1% | 0.125W | 200V |

| | | | | | | | | | | | | |
|-----|-----|---|-----|---------------|----|-----|----------|------|------|----|--------|------|
| --- | R8 | 1 | St. | WDM-98979-000 | LS | SMD | Met.Wid. | 0805 | 2K2 | 1% | 0.125W | 200V |
| --- | R9 | 1 | St. | WDM-98987-000 | LS | SMD | Met.Wid. | 0805 | 1K1 | 1% | 0.125W | 200V |
| --- | R10 | 1 | St. | WDM-98977-000 | LS | SMD | Met.Wid. | 0805 | 2K7 | 1% | 0.125W | 200V |
| --- | R11 | 1 | St. | WDM-99008-000 | BS | SMD | Met.Wid. | 0805 | 150R | 1% | 0.125W | 200V |
| --- | R12 | 1 | St. | WDM-99008-000 | BS | SMD | Met.Wid. | 0805 | 150R | 1% | 0.125W | 200V |
| --- | R13 | 1 | St. | WDM-99008-000 | BS | SMD | Met.Wid. | 0805 | 150R | 1% | 0.125W | 200V |
| --- | R14 | 1 | St. | WDM-99008-000 | BS | SMD | Met.Wid. | 0805 | 150R | 1% | 0.125W | 200V |
| --- | R15 | 1 | St. | WDM-99008-000 | BS | SMD | Met.Wid. | 0805 | 150R | 1% | 0.125W | 200V |
| --- | R16 | 1 | St. | WDM-99008-000 | BS | SMD | Met.Wid. | 0805 | 150R | 1% | 0.125W | 200V |
| --- | R17 | 1 | St. | WDM-99008-000 | BS | SMD | Met.Wid. | 0805 | 150R | 1% | 0.125W | 200V |
| --- | R18 | 1 | St. | WDM-99008-000 | BS | SMD | Met.Wid. | 0805 | 150R | 1% | 0.125W | 200V |
| --- | R19 | 1 | St. | WDM-99008-000 | BS | SMD | Met.Wid. | 0805 | 150R | 1% | 0.125W | 200V |
| --- | R20 | 1 | St. | WDM-99008-000 | BS | SMD | Met.Wid. | 0805 | 150R | 1% | 0.125W | 200V |
| --- | R21 | 1 | St. | WDM-99008-000 | BS | SMD | Met.Wid. | 0805 | 150R | 1% | 0.125W | 200V |
| --- | R22 | 1 | St. | WDM-99008-000 | BS | SMD | Met.Wid. | 0805 | 150R | 1% | 0.125W | 200V |
| --- | R23 | 1 | St. | WDM-99008-000 | BS | SMD | Met.Wid. | 0805 | 150R | 1% | 0.125W | 200V |
| --- | R24 | 1 | St. | WDM-99008-000 | BS | SMD | Met.Wid. | 0805 | 150R | 1% | 0.125W | 200V |
| --- | R25 | 1 | St. | WDM-99008-000 | BS | SMD | Met.Wid. | 0805 | 150R | 1% | 0.125W | 200V |
| --- | R26 | 1 | St. | WDM-99008-000 | BS | SMD | Met.Wid. | 0805 | 150R | 1% | 0.125W | 200V |
| --- | R27 | 1 | St. | WDM-99008-000 | BS | SMD | Met.Wid. | 0805 | 150R | 1% | 0.125W | 200V |
| --- | R28 | 1 | St. | WDM-99008-000 | BS | SMD | Met.Wid. | 0805 | 150R | 1% | 0.125W | 200V |
| --- | R29 | 1 | St. | WDM-99008-000 | BS | SMD | Met.Wid. | 0805 | 150R | 1% | 0.125W | 200V |
| --- | R30 | 1 | St. | WDM-99008-000 | BS | SMD | Met.Wid. | 0805 | 150R | 1% | 0.125W | 200V |
| --- | R31 | 1 | St. | WDM-99008-000 | BS | SMD | Met.Wid. | 0805 | 150R | 1% | 0.125W | 200V |
| --- | R32 | 1 | St. | WDM-99008-000 | BS | SMD | Met.Wid. | 0805 | 150R | 1% | 0.125W | 200V |
| --- | R33 | 1 | St. | WDM-99008-000 | BS | SMD | Met.Wid. | 0805 | 150R | 1% | 0.125W | 200V |
| --- | R34 | 1 | St. | WDM-99008-000 | BS | SMD | Met.Wid. | 0805 | 150R | 1% | 0.125W | 200V |
| --- | R35 | 1 | St. | WDM-99008-000 | BS | SMD | Met.Wid. | 0805 | 150R | 1% | 0.125W | 200V |
| --- | R36 | 1 | St. | WDM-99008-000 | BS | SMD | Met.Wid. | 0805 | 150R | 1% | 0.125W | 200V |
| --- | R37 | 1 | St. | WDM-99008-000 | BS | SMD | Met.Wid. | 0805 | 150R | 1% | 0.125W | 200V |

| | | | | | | | | | | | | |
|-----|------|---|-----|---------------|----|-----|--------------|-----------|---------|----|--------|---------|
| --- | R38 | 1 | St. | WDM-99008-000 | BS | SMD | Met.Wid. | 0805 | 150R | 1% | 0.125W | 200V |
| --- | R39 | 1 | St. | WDM-99008-000 | BS | SMD | Met.Wid. | 0805 | 150R | 1% | 0.125W | 200V |
| --- | R40 | 1 | St. | WDM-99008-000 | BS | SMD | Met.Wid. | 0805 | 150R | 1% | 0.125W | 200V |
| --- | R41 | 1 | St. | WDM-99008-000 | BS | SMD | Met.Wid. | 0805 | 150R | 1% | 0.125W | 200V |
| --- | R42 | 1 | St. | WDM-99008-000 | BS | SMD | Met.Wid. | 0805 | 150R | 1% | 0.125W | 200V |
| --- | R43 | 1 | St. | WDM-98979-000 | LS | SMD | Met.Wid. | 0805 | 2K2 | 1% | 0.125W | 200V |
| --- | R44 | 1 | St. | WDM-90326-000 | LS | SMD | Met.Wid. | 0805 | 2K74 | 1% | | |
| --- | R45 | 1 | St. | WDM-98977-000 | LS | SMD | Met.Wid. | 0805 | 2K7 | 1% | 0.125W | 200V |
| --- | R46 | 1 | St. | WDM-98971-000 | LS | SMD | Met.Wid. | 0805 | 4K7 | 1% | 0.125W | 200V |
| --- | R47 | 1 | St. | WDM-98971-000 | LS | SMD | Met.Wid. | 0805 | 4K7 | 1% | 0.125W | 200V |
| --- | R48 | 1 | St. | WDM-98980-000 | LS | SMD | Met.Wid. | 0805 | 0R | 1% | 0.125W | 200V |
| --- | R49 | 1 | St. | WDM-98971-000 | LS | SMD | Met.Wid. | 0805 | 4K7 | 1% | 0.125W | 200V |
| --- | R50 | 1 | St. | WDM-98971-000 | LS | SMD | Met.Wid. | 0805 | 4K7 | 1% | 0.125W | 200V |
| --- | R51 | 1 | St. | WDM-98964-000 | LS | SMD | Met.Wid. | 0805 | 10K | 1% | 0.125W | 200V |
| --- | R52 | 1 | St. | WDM-98964-000 | BS | SMD | Met.Wid. | 0805 | 10K | 1% | 0.125W | 200V |
| --- | R53 | 1 | St. | WDM-98964-000 | LS | SMD | Met.Wid. | 0805 | 10K | 1% | 0.125W | 200V |
| --- | R54 | 1 | St. | WDM-98964-000 | LS | SMD | Met.Wid. | 0805 | 10K | 1% | 0.125W | 200V |
| --- | R55 | 1 | St. | WDM-98964-000 | LS | SMD | Met.Wid. | 0805 | 10K | 1% | 0.125W | 200V |
| --- | R56 | 1 | St. | WDM-98964-000 | LS | SMD | Met.Wid. | 0805 | 10K | 1% | 0.125W | 200V |
| --- | R57 | 1 | St. | WDM-98964-000 | LS | SMD | Met.Wid. | 0805 | 10K | 1% | 0.125W | 200V |
| --- | R58 | 1 | St. | WDM-98964-000 | LS | SMD | Met.Wid. | 0805 | 10K | 1% | 0.125W | 200V |
| --- | R59 | 1 | St. | WDM-98964-000 | BS | SMD | Met.Wid. | 0805 | 10K | 1% | 0.125W | 200V |
| --- | R60 | 1 | St. | WDM-98964-000 | BS | SMD | Met.Wid. | 0805 | 10K | 1% | 0.125W | 200V |
| --- | R61 | 1 | St. | WDM-98964-000 | BS | SMD | Met.Wid. | 0805 | 10K | 1% | 0.125W | 200V |
| --- | R62 | 1 | St. | WDM-99019-000 | LS | SMD | Met.Wid. | 0805 | 51R | 1% | 0.125W | 200V |
| --- | R63 | 1 | St. | WDM-99019-000 | LS | SMD | Met.Wid. | 0805 | 51R | 1% | 0.125W | 200V |
| --- | R101 | 1 | St. | XLJ-99742-000 | LS | --- | fikt.Bauteil | LötJumper | 1x2pol. | | | brücken |
| --- | R102 | 1 | St. | XLJ-99742-000 | LS | --- | fikt.Bauteil | LötJumper | 1x2pol. | | | |
| --- | R103 | 1 | St. | XLJ-99742-000 | LS | --- | fikt.Bauteil | LötJumper | 1x2pol. | | | |
| --- | R104 | 1 | St. | XLJ-99742-000 | LS | --- | fikt.Bauteil | LötJumper | 1x2pol. | | | brücken |

| | | | | | | | | | | |
|-----|------|---|-----|---------------|----|-----|--------------|-----------|---------|----------------|
| --- | R105 | 1 | St. | XLJ-99742-000 | LS | --- | fikt.Bauteil | Lötjumper | 1x2pol. | brücken |
| --- | R106 | 1 | St. | XLJ-99742-000 | LS | --- | fikt.Bauteil | Lötjumper | 1x2pol. | brücken |
| --- | R107 | 1 | St. | XLJ-99742-000 | LS | --- | fikt.Bauteil | Lötjumper | 1x2pol. | brücken |
| --- | R108 | 1 | St. | XLJ-99742-000 | LS | --- | fikt.Bauteil | Lötjumper | 1x2pol. | brücken |
| --- | R109 | 1 | St. | WDM-98964-000 | LS | SMD | Met.Wid. | 0805 | 10K | 1% 0.125W 200V |
| --- | R110 | 1 | St. | WDM-98964-000 | LS | SMD | Met.Wid. | 0805 | 10K | 1% 0.125W 200V |
| --- | R111 | 1 | St. | WDM-98964-000 | LS | SMD | Met.Wid. | 0805 | 10K | 1% 0.125W 200V |
| --- | R112 | 1 | St. | WDM-98964-000 | LS | SMD | Met.Wid. | 0805 | 10K | 1% 0.125W 200V |
| --- | R113 | 1 | St. | WDM-98964-000 | LS | SMD | Met.Wid. | 0805 | 10K | 1% 0.125W 200V |
| --- | R114 | 1 | St. | WDM-98964-000 | LS | SMD | Met.Wid. | 0805 | 10K | 1% 0.125W 200V |
| --- | R115 | 1 | St. | WDM-98964-000 | LS | SMD | Met.Wid. | 0805 | 10K | 1% 0.125W 200V |
| --- | R116 | 1 | St. | WDM-98964-000 | LS | SMD | Met.Wid. | 0805 | 10K | 1% 0.125W 200V |
| --- | R117 | 1 | St. | WDM-98964-000 | LS | SMD | Met.Wid. | 0805 | 10K | 1% 0.125W 200V |
| --- | R118 | 1 | St. | WDM-98964-000 | LS | SMD | Met.Wid. | 0805 | 10K | 1% 0.125W 200V |
| --- | R119 | 1 | St. | WDM-98964-000 | LS | SMD | Met.Wid. | 0805 | 10K | 1% 0.125W 200V |
| --- | R120 | 1 | St. | WDM-98964-000 | LS | SMD | Met.Wid. | 0805 | 10K | 1% 0.125W 200V |
| --- | R121 | 1 | St. | WDM-98964-000 | LS | SMD | Met.Wid. | 0805 | 10K | 1% 0.125W 200V |
| --- | R122 | 1 | St. | WDM-98964-000 | LS | SMD | Met.Wid. | 0805 | 10K | 1% 0.125W 200V |
| --- | R123 | 1 | St. | WDM-98964-000 | LS | SMD | Met.Wid. | 0805 | 10K | 1% 0.125W 200V |
| --- | R124 | 1 | St. | WDM-98964-000 | LS | SMD | Met.Wid. | 0805 | 10K | 1% 0.125W 200V |
| --- | R125 | 1 | St. | WDM-98964-000 | LS | SMD | Met.Wid. | 0805 | 10K | 1% 0.125W 200V |
| --- | R126 | 1 | St. | WDM-98964-000 | LS | SMD | Met.Wid. | 0805 | 10K | 1% 0.125W 200V |
| --- | R127 | 1 | St. | WDM-98964-000 | LS | SMD | Met.Wid. | 0805 | 10K | 1% 0.125W 200V |
| --- | R128 | 1 | St. | WDM-98964-000 | LS | SMD | Met.Wid. | 0805 | 10K | 1% 0.125W 200V |
| --- | R129 | 1 | St. | WDM-98964-000 | LS | SMD | Met.Wid. | 0805 | 10K | 1% 0.125W 200V |
| --- | R130 | 1 | St. | WDM-98964-000 | BS | SMD | Met.Wid. | 0805 | 10K | 1% 0.125W 200V |
| --- | R131 | 1 | St. | WDM-98964-000 | BS | SMD | Met.Wid. | 0805 | 10K | 1% 0.125W 200V |
| --- | R132 | 1 | St. | WDM-98964-000 | LS | SMD | Met.Wid. | 0805 | 10K | 1% 0.125W 200V |
| --- | R133 | 1 | St. | WDM-98964-000 | LS | SMD | Met.Wid. | 0805 | 10K | 1% 0.125W 200V |
| --- | R134 | 1 | St. | WDM-98964-000 | BS | SMD | Met.Wid. | 0805 | 10K | 1% 0.125W 200V |

| | | | | | | | | | | | | |
|-----|------|---|-----|---------------|----|-----|----------|------|-----|----|--------|------|
| --- | R135 | 1 | St. | WDM-98964-000 | BS | SMD | Met.Wid. | 0805 | 10K | 1% | 0.125W | 200V |
| --- | R136 | 1 | St. | WDM-98964-000 | BS | SMD | Met.Wid. | 0805 | 10K | 1% | 0.125W | 200V |
| --- | R137 | 1 | St. | WDM-98964-000 | LS | SMD | Met.Wid. | 0805 | 10K | 1% | 0.125W | 200V |
| --- | R138 | 1 | St. | WDM-98964-000 | BS | SMD | Met.Wid. | 0805 | 10K | 1% | 0.125W | 200V |
| --- | R139 | 1 | St. | WDM-98964-000 | LS | SMD | Met.Wid. | 0805 | 10K | 1% | 0.125W | 200V |
| --- | R140 | 1 | St. | WDM-98964-000 | LS | SMD | Met.Wid. | 0805 | 10K | 1% | 0.125W | 200V |
| --- | R141 | 1 | St. | WDM-98964-000 | LS | SMD | Met.Wid. | 0805 | 10K | 1% | 0.125W | 200V |
| --- | R142 | 1 | St. | WDM-98964-000 | LS | SMD | Met.Wid. | 0805 | 10K | 1% | 0.125W | 200V |
| --- | R143 | 1 | St. | WDM-98964-000 | BS | SMD | Met.Wid. | 0805 | 10K | 1% | 0.125W | 200V |
| --- | R144 | 1 | St. | WDM-98964-000 | LS | SMD | Met.Wid. | 0805 | 10K | 1% | 0.125W | 200V |
| --- | R145 | 1 | St. | WDM-98964-000 | LS | SMD | Met.Wid. | 0805 | 10K | 1% | 0.125W | 200V |
| --- | R146 | 1 | St. | WDM-98964-000 | LS | SMD | Met.Wid. | 0805 | 10K | 1% | 0.125W | 200V |
| --- | R147 | 1 | St. | WDM-98964-000 | LS | SMD | Met.Wid. | 0805 | 10K | 1% | 0.125W | 200V |
| --- | R148 | 1 | St. | WDM-98964-000 | BS | SMD | Met.Wid. | 0805 | 10K | 1% | 0.125W | 200V |
| --- | R149 | 1 | St. | WDM-98971-000 | LS | SMD | Met.Wid. | 0805 | 4K7 | 1% | 0.125W | 200V |
| --- | R150 | 1 | St. | WDM-98971-000 | LS | SMD | Met.Wid. | 0805 | 4K7 | 1% | 0.125W | 200V |
| --- | R151 | 1 | St. | WDM-98971-000 | LS | SMD | Met.Wid. | 0805 | 4K7 | 1% | 0.125W | 200V |
| --- | R152 | 1 | St. | WDM-98971-000 | BS | SMD | Met.Wid. | 0805 | 4K7 | 1% | 0.125W | 200V |
| --- | R153 | 1 | St. | WDM-98971-000 | BS | SMD | Met.Wid. | 0805 | 4K7 | 1% | 0.125W | 200V |
| --- | R154 | 1 | St. | WDM-98971-000 | BS | SMD | Met.Wid. | 0805 | 4K7 | 1% | 0.125W | 200V |
| --- | R155 | 1 | St. | WDM-98971-000 | BS | SMD | Met.Wid. | 0805 | 4K7 | 1% | 0.125W | 200V |
| --- | R156 | 1 | St. | WDM-98971-000 | BS | SMD | Met.Wid. | 0805 | 4K7 | 1% | 0.125W | 200V |
| --- | R157 | 1 | St. | WDM-98971-000 | LS | SMD | Met.Wid. | 0805 | 4K7 | 1% | 0.125W | 200V |
| --- | R158 | 1 | St. | WDM-98971-000 | BS | SMD | Met.Wid. | 0805 | 4K7 | 1% | 0.125W | 200V |
| --- | R159 | 1 | St. | WDM-98971-000 | BS | SMD | Met.Wid. | 0805 | 4K7 | 1% | 0.125W | 200V |
| --- | R160 | 1 | St. | WDM-98971-000 | LS | SMD | Met.Wid. | 0805 | 4K7 | 1% | 0.125W | 200V |
| --- | R161 | 1 | St. | WDM-98971-000 | LS | SMD | Met.Wid. | 0805 | 4K7 | 1% | 0.125W | 200V |
| --- | R162 | 1 | St. | WDM-98971-000 | LS | SMD | Met.Wid. | 0805 | 4K7 | 1% | 0.125W | 200V |
| --- | R163 | 1 | St. | WDM-98980-000 | BS | SMD | Met.Wid. | 0805 | 0R | 1% | 0.125W | 200V |
| --- | R164 | 1 | St. | WDM-98971-000 | BS | SMD | Met.Wid. | 0805 | 4K7 | 1% | 0.125W | 200V |

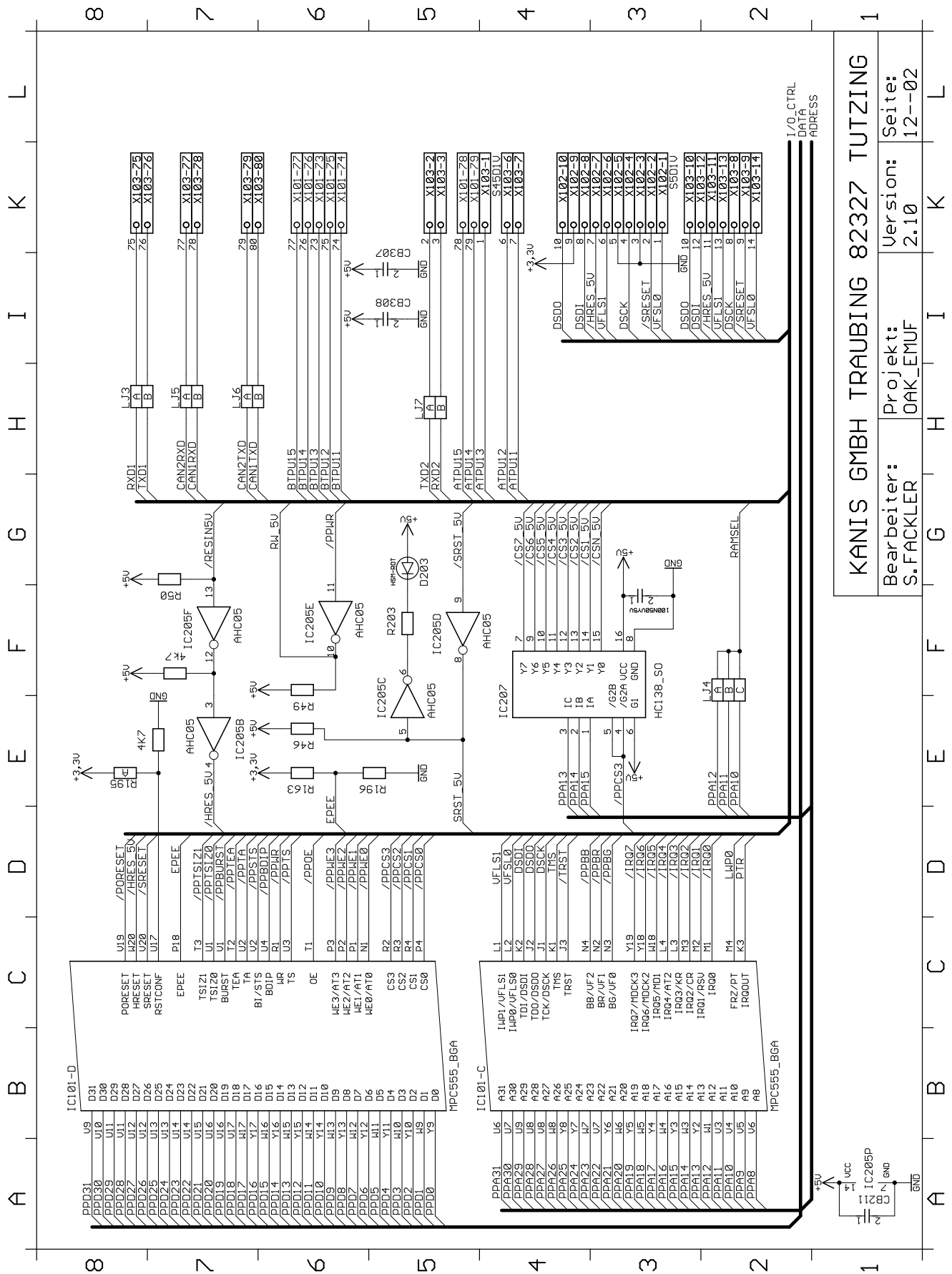
| | | | | | | | | | | | | |
|-----|------|---|-----|---------------|----|-----|----------|------|-----|----|--------|------|
| --- | R165 | 1 | St. | WDM-98971-000 | LS | SMD | Met.Wid. | 0805 | 4K7 | 1% | 0.125W | 200V |
| --- | R166 | 1 | St. | WDM-98971-000 | LS | SMD | Met.Wid. | 0805 | 4K7 | 1% | 0.125W | 200V |
| --- | R167 | 1 | St. | WDM-98971-000 | LS | SMD | Met.Wid. | 0805 | 4K7 | 1% | 0.125W | 200V |
| --- | R168 | 1 | St. | WDM-98971-000 | LS | SMD | Met.Wid. | 0805 | 4K7 | 1% | 0.125W | 200V |
| --- | R169 | 1 | St. | WDM-98971-000 | LS | SMD | Met.Wid. | 0805 | 4K7 | 1% | 0.125W | 200V |
| --- | R170 | 1 | St. | WDM-98971-000 | LS | SMD | Met.Wid. | 0805 | 4K7 | 1% | 0.125W | 200V |
| --- | R171 | 1 | St. | WDM-98971-000 | LS | SMD | Met.Wid. | 0805 | 4K7 | 1% | 0.125W | 200V |
| --- | R172 | 1 | St. | WDM-98971-000 | BS | SMD | Met.Wid. | 0805 | 4K7 | 1% | 0.125W | 200V |
| --- | R173 | 1 | St. | WDM-98971-000 | LS | SMD | Met.Wid. | 0805 | 4K7 | 1% | 0.125W | 200V |
| --- | R174 | 1 | St. | WDM-98971-000 | BS | SMD | Met.Wid. | 0805 | 4K7 | 1% | 0.125W | 200V |
| --- | R175 | 1 | St. | WDM-98971-000 | LS | SMD | Met.Wid. | 0805 | 4K7 | 1% | 0.125W | 200V |
| --- | R176 | 1 | St. | WDM-98971-000 | LS | SMD | Met.Wid. | 0805 | 4K7 | 1% | 0.125W | 200V |
| --- | R177 | 1 | St. | WDM-98971-000 | BS | SMD | Met.Wid. | 0805 | 4K7 | 1% | 0.125W | 200V |
| --- | R178 | 1 | St. | WDM-98971-000 | BS | SMD | Met.Wid. | 0805 | 4K7 | 1% | 0.125W | 200V |
| --- | R179 | 1 | St. | WDM-98971-000 | LS | SMD | Met.Wid. | 0805 | 4K7 | 1% | 0.125W | 200V |
| --- | R180 | 1 | St. | WDM-98971-000 | LS | SMD | Met.Wid. | 0805 | 4K7 | 1% | 0.125W | 200V |
| --- | R181 | 1 | St. | WDM-98971-000 | LS | SMD | Met.Wid. | 0805 | 4K7 | 1% | 0.125W | 200V |
| --- | R182 | 1 | St. | WDM-98971-000 | BS | SMD | Met.Wid. | 0805 | 4K7 | 1% | 0.125W | 200V |
| --- | R183 | 1 | St. | WDM-98971-000 | BS | SMD | Met.Wid. | 0805 | 4K7 | 1% | 0.125W | 200V |
| --- | R184 | 1 | St. | WDM-98971-000 | LS | SMD | Met.Wid. | 0805 | 4K7 | 1% | 0.125W | 200V |
| --- | R185 | 1 | St. | WDM-98971-000 | LS | SMD | Met.Wid. | 0805 | 4K7 | 1% | 0.125W | 200V |
| --- | R186 | 1 | St. | WDM-98971-000 | BS | SMD | Met.Wid. | 0805 | 4K7 | 1% | 0.125W | 200V |
| --- | R187 | 1 | St. | WDM-98971-000 | BS | SMD | Met.Wid. | 0805 | 4K7 | 1% | 0.125W | 200V |
| --- | R188 | 1 | St. | WDM-98971-000 | BS | SMD | Met.Wid. | 0805 | 4K7 | 1% | 0.125W | 200V |
| --- | R189 | 1 | St. | WDM-98971-000 | LS | SMD | Met.Wid. | 0805 | 4K7 | 1% | 0.125W | 200V |
| --- | R190 | 1 | St. | WDM-98971-000 | LS | SMD | Met.Wid. | 0805 | 4K7 | 1% | 0.125W | 200V |
| --- | R191 | 1 | St. | WDM-98971-000 | LS | SMD | Met.Wid. | 0805 | 4K7 | 1% | 0.125W | 200V |
| --- | R192 | 1 | St. | WDM-98971-000 | LS | SMD | Met.Wid. | 0805 | 4K7 | 1% | 0.125W | 200V |
| --- | R193 | 1 | St. | WDM-98971-000 | LS | SMD | Met.Wid. | 0805 | 4K7 | 1% | 0.125W | 200V |
| --- | R194 | 1 | St. | WDM-98971-000 | LS | SMD | Met.Wid. | 0805 | 4K7 | 1% | 0.125W | 200V |

| | | | | | | | | | | | | |
|-----|------|---|-----|---------------|----|-----|----------|------|-----|----|--------|-----|
| --- | R505 | 1 | St. | WDM-98893-000 | LS | SMD | Met.Wid. | 0603 | 68R | 1% | 0.063W | 50V |
| --- | R506 | 1 | St. | WDM-98893-000 | BS | SMD | Met.Wid. | 0603 | 68R | 1% | 0.063W | 50V |
| --- | R507 | 1 | St. | WDM-98893-000 | LS | SMD | Met.Wid. | 0603 | 68R | 1% | 0.063W | 50V |
| --- | R508 | 1 | St. | WDM-98893-000 | LS | SMD | Met.Wid. | 0603 | 68R | 1% | 0.063W | 50V |
| --- | R509 | 1 | St. | WDM-98893-000 | LS | SMD | Met.Wid. | 0603 | 68R | 1% | 0.063W | 50V |
| --- | R510 | 1 | St. | WDM-98893-000 | LS | SMD | Met.Wid. | 0603 | 68R | 1% | 0.063W | 50V |
| --- | R511 | 1 | St. | WDM-98893-000 | LS | SMD | Met.Wid. | 0603 | 68R | 1% | 0.063W | 50V |
| --- | R512 | 1 | St. | WDM-98893-000 | BS | SMD | Met.Wid. | 0603 | 68R | 1% | 0.063W | 50V |
| --- | R513 | 1 | St. | WDM-98893-000 | LS | SMD | Met.Wid. | 0603 | 68R | 1% | 0.063W | 50V |
| --- | R514 | 1 | St. | WDM-98893-000 | BS | SMD | Met.Wid. | 0603 | 68R | 1% | 0.063W | 50V |
| --- | R515 | 1 | St. | WDM-98893-000 | LS | SMD | Met.Wid. | 0603 | 68R | 1% | 0.063W | 50V |
| --- | R516 | 1 | St. | WDM-98893-000 | LS | SMD | Met.Wid. | 0603 | 68R | 1% | 0.063W | 50V |
| --- | R517 | 1 | St. | WDM-98893-000 | LS | SMD | Met.Wid. | 0603 | 68R | 1% | 0.063W | 50V |
| --- | R518 | 1 | St. | WDM-98893-000 | LS | SMD | Met.Wid. | 0603 | 68R | 1% | 0.063W | 50V |
| --- | R519 | 1 | St. | WDM-98893-000 | LS | SMD | Met.Wid. | 0603 | 68R | 1% | 0.063W | 50V |
| --- | R520 | 1 | St. | WDM-98893-000 | LS | SMD | Met.Wid. | 0603 | 68R | 1% | 0.063W | 50V |
| --- | R521 | 1 | St. | WDM-98893-000 | LS | SMD | Met.Wid. | 0603 | 68R | 1% | 0.063W | 50V |
| --- | R522 | 1 | St. | WDM-98893-000 | LS | SMD | Met.Wid. | 0603 | 68R | 1% | 0.063W | 50V |
| --- | R523 | 1 | St. | WDM-98893-000 | LS | SMD | Met.Wid. | 0603 | 68R | 1% | 0.063W | 50V |
| --- | R524 | 1 | St. | WDM-98893-000 | LS | SMD | Met.Wid. | 0603 | 68R | 1% | 0.063W | 50V |
| --- | R525 | 1 | St. | WDM-98893-000 | LS | SMD | Met.Wid. | 0603 | 68R | 1% | 0.063W | 50V |
| --- | R526 | 1 | St. | WDM-98893-000 | LS | SMD | Met.Wid. | 0603 | 68R | 1% | 0.063W | 50V |
| --- | R527 | 1 | St. | WDM-98893-000 | LS | SMD | Met.Wid. | 0603 | 68R | 1% | 0.063W | 50V |
| --- | R528 | 1 | St. | WDM-98893-000 | BS | SMD | Met.Wid. | 0603 | 68R | 1% | 0.063W | 50V |
| --- | R529 | 1 | St. | WDM-98893-000 | BS | SMD | Met.Wid. | 0603 | 68R | 1% | 0.063W | 50V |
| --- | R530 | 1 | St. | WDM-98893-000 | BS | SMD | Met.Wid. | 0603 | 68R | 1% | 0.063W | 50V |
| --- | R531 | 1 | St. | WDM-98893-000 | BS | SMD | Met.Wid. | 0603 | 68R | 1% | 0.063W | 50V |
| --- | R532 | 1 | St. | WDM-98893-000 | LS | SMD | Met.Wid. | 0603 | 68R | 1% | 0.063W | 50V |
| --- | R533 | 1 | St. | WDM-98893-000 | LS | SMD | Met.Wid. | 0603 | 68R | 1% | 0.063W | 50V |
| --- | R534 | 1 | St. | WDM-98893-000 | LS | SMD | Met.Wid. | 0603 | 68R | 1% | 0.063W | 50V |

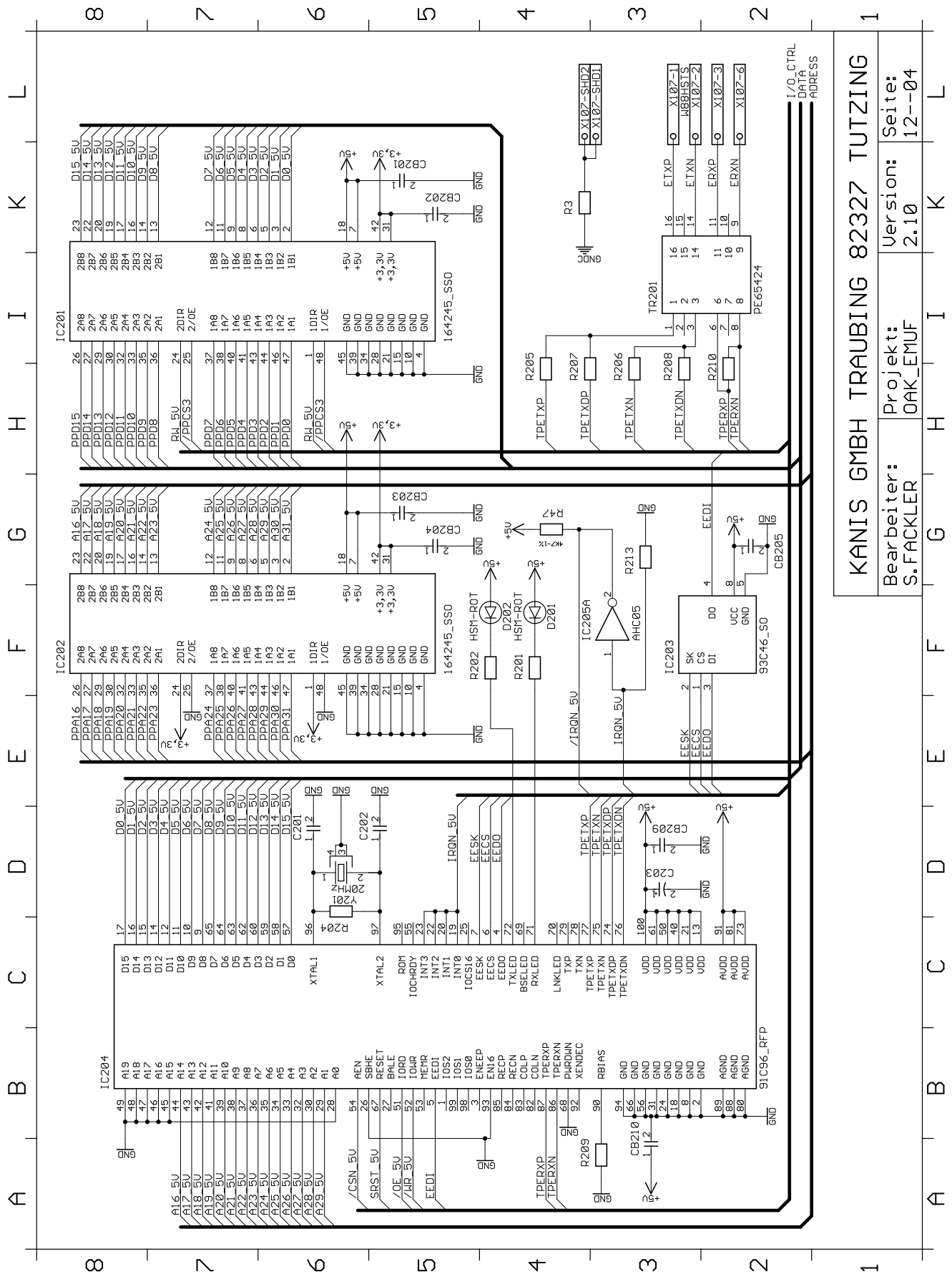
| | | | | | | | | | | | | |
|-----|------|---|-----|---------------|----|-----|----------|------|-----|----|--------|-----|
| --- | R535 | 1 | St. | WDM-98893-000 | LS | SMD | Met.Wid. | 0603 | 68R | 1% | 0.063W | 50V |
| --- | R536 | 1 | St. | WDM-98893-000 | LS | SMD | Met.Wid. | 0603 | 68R | 1% | 0.063W | 50V |
| --- | R537 | 1 | St. | WDM-98893-000 | LS | SMD | Met.Wid. | 0603 | 68R | 1% | 0.063W | 50V |
| --- | R538 | 1 | St. | WDM-98893-000 | LS | SMD | Met.Wid. | 0603 | 68R | 1% | 0.063W | 50V |
| --- | R539 | 1 | St. | WDM-98893-000 | BS | SMD | Met.Wid. | 0603 | 68R | 1% | 0.063W | 50V |
| --- | R540 | 1 | St. | WDM-98893-000 | LS | SMD | Met.Wid. | 0603 | 68R | 1% | 0.063W | 50V |
| --- | R541 | 1 | St. | WDM-98893-000 | LS | SMD | Met.Wid. | 0603 | 68R | 1% | 0.063W | 50V |
| --- | R542 | 1 | St. | WDM-98893-000 | LS | SMD | Met.Wid. | 0603 | 68R | 1% | 0.063W | 50V |
| --- | R543 | 1 | St. | WDM-98893-000 | LS | SMD | Met.Wid. | 0603 | 68R | 1% | 0.063W | 50V |
| --- | R544 | 1 | St. | WDM-98893-000 | LS | SMD | Met.Wid. | 0603 | 68R | 1% | 0.063W | 50V |
| --- | R545 | 1 | St. | WDM-98893-000 | LS | SMD | Met.Wid. | 0603 | 68R | 1% | 0.063W | 50V |
| --- | R546 | 1 | St. | WDM-98893-000 | BS | SMD | Met.Wid. | 0603 | 68R | 1% | 0.063W | 50V |
| --- | R547 | 1 | St. | WDM-98893-000 | LS | SMD | Met.Wid. | 0603 | 68R | 1% | 0.063W | 50V |
| --- | R548 | 1 | St. | WDM-98893-000 | BS | SMD | Met.Wid. | 0603 | 68R | 1% | 0.063W | 50V |
| --- | R549 | 1 | St. | WDM-98893-000 | LS | SMD | Met.Wid. | 0603 | 68R | 1% | 0.063W | 50V |
| --- | R550 | 1 | St. | WDM-98893-000 | LS | SMD | Met.Wid. | 0603 | 68R | 1% | 0.063W | 50V |
| --- | R551 | 1 | St. | WDM-98893-000 | LS | SMD | Met.Wid. | 0603 | 68R | 1% | 0.063W | 50V |
| --- | R552 | 1 | St. | WDM-98893-000 | LS | SMD | Met.Wid. | 0603 | 68R | 1% | 0.063W | 50V |
| --- | R553 | 1 | St. | WDM-98893-000 | LS | SMD | Met.Wid. | 0603 | 68R | 1% | 0.063W | 50V |
| --- | R554 | 1 | St. | WDM-98893-000 | LS | SMD | Met.Wid. | 0603 | 68R | 1% | 0.063W | 50V |
| --- | R555 | 1 | St. | WDM-98893-000 | LS | SMD | Met.Wid. | 0603 | 68R | 1% | 0.063W | 50V |
| --- | R556 | 1 | St. | WDM-98893-000 | LS | SMD | Met.Wid. | 0603 | 68R | 1% | 0.063W | 50V |
| --- | R557 | 1 | St. | WDM-98893-000 | LS | SMD | Met.Wid. | 0603 | 68R | 1% | 0.063W | 50V |
| --- | R558 | 1 | St. | WDM-98893-000 | LS | SMD | Met.Wid. | 0603 | 68R | 1% | 0.063W | 50V |
| --- | R559 | 1 | St. | WDM-98893-000 | LS | SMD | Met.Wid. | 0603 | 68R | 1% | 0.063W | 50V |
| --- | R560 | 1 | St. | WDM-98893-000 | LS | SMD | Met.Wid. | 0603 | 68R | 1% | 0.063W | 50V |
| --- | R561 | 1 | St. | WDM-98893-000 | LS | SMD | Met.Wid. | 0603 | 68R | 1% | 0.063W | 50V |
| --- | R562 | 1 | St. | WDM-98893-000 | LS | SMD | Met.Wid. | 0603 | 68R | 1% | 0.063W | 50V |
| --- | R563 | 1 | St. | WDM-98893-000 | BS | SMD | Met.Wid. | 0603 | 68R | 1% | 0.063W | 50V |
| --- | R564 | 1 | St. | WDM-98893-000 | BS | SMD | Met.Wid. | 0603 | 68R | 1% | 0.063W | 50V |

| | | | | | | | | | | | | |
|-----|-------|---|-----|---------------|----|-----|------------|-----------------|-------------|----------|-----------|----------|
| --- | R565 | 1 | St. | WDM-98893-000 | LS | SMD | Met.Wid. | 0603 | 68R | 1% | 0.063W | 50V |
| --- | R566 | 1 | St. | WDM-98893-000 | BS | SMD | Met.Wid. | 0603 | 68R | 1% | 0.063W | 50V |
| --- | R567 | 1 | St. | WDM-98893-000 | LS | SMD | Met.Wid. | 0603 | 68R | 1% | 0.063W | 50V |
| --- | R568 | 1 | St. | WDM-98893-000 | LS | SMD | Met.Wid. | 0603 | 68R | 1% | 0.063W | 50V |
| --- | R569 | 1 | St. | WDM-98893-000 | BS | SMD | Met.Wid. | 0603 | 68R | 1% | 0.063W | 50V |
| --- | R570 | 1 | St. | WDM-98893-000 | BS | SMD | Met.Wid. | 0603 | 68R | 1% | 0.063W | 50V |
| --- | R1103 | 1 | St. | WDM-98917-000 | LS | SMD | Met.Wid. | 0805 | 1M | 1% | 0.125W | 200V |
| --- | REF | 1 | St. | KKO-99999-000 | BS | --- | fikt.Baut. | Layoutreferenz | | | | |
| --- | S201 | 1 | St. | STS-99823-000 | BS | --- | Stiftl. | SL22/124-S | 2pol.2reih | Q0.635mm | sel. Gold | RM2.54 |
| --- | ST1 | 1 | St. | STS-99517-000 | BS | --- | Stiftl. | SDEX9PNTD | 9pol. | | | Dsub |
| --- | ST2 | 1 | St. | STS-99811-000 | BS | --- | Stiftl. | SL22/124-S | 26pol.2reih | Q0.635mm | sel. Gold | RM2.54 |
| --- | ST3 | 1 | St. | STS-99451-000 | BS | --- | Stiftl. | 0903 196 6921 | 96pol.3reih | | | VG a-b-c |
| --- | TR201 | 1 | St. | UEB-99996-000 | BS | --- | Übertrager | PE65424 | | | | |
| --- | X101 | 1 | St. | STS-99330-000 | BS | --- | Stiftl. | SL22/124-S | 90pol.2reih | | sel. Gold | RM2.54 |
| --- | X102 | 1 | St. | STS-99445-000 | BS | --- | Stiftl. | 0918 510 6324 | 10pol.2reih | Q0.635mm | | Wanne |
| --- | X103 | 1 | St. | STS-99330-000 | BS | --- | Stiftl. | SL22/124-S | 90pol.2reih | | sel. Gold | RM2.54 |
| --- | X107 | 1 | St. | STB-99513-000 | BS | --- | Buchse | SS6488S-NF | 8/8pol. | | | Telefon |
| --- | Y101 | 1 | St. | QUA-99912-000 | BS | --- | Quarz | HC-49 (4mm) | 4.000MHz | | | |
| --- | Y201 | 1 | St. | QUA-99893-000 | BS | --- | Quarz | HC-49 (4mm) | 20.00MHz | | | |
| --- | Y301 | 1 | St. | QUA-99999-000 | LS | --- | Quarz | TC26MINI | 32.768KHz | | | |
| --- | ZERO | 1 | St. | KKO-99998-000 | BS | --- | fikt.Baut. | Nullpunkt f.Be> | | | | |

bei =beigestellt vom Kunden, LS =Lötseite, BS =Bauteilseite, ICT =Incircuit Test, SMD =Surface Mounted Device, NB =nicht bestückt
 Eine Verwendung technisch hochwertiger Bauteile behalten wir uns vor, z. B. 1% Widerstände statt 5% Widerstände, etc.

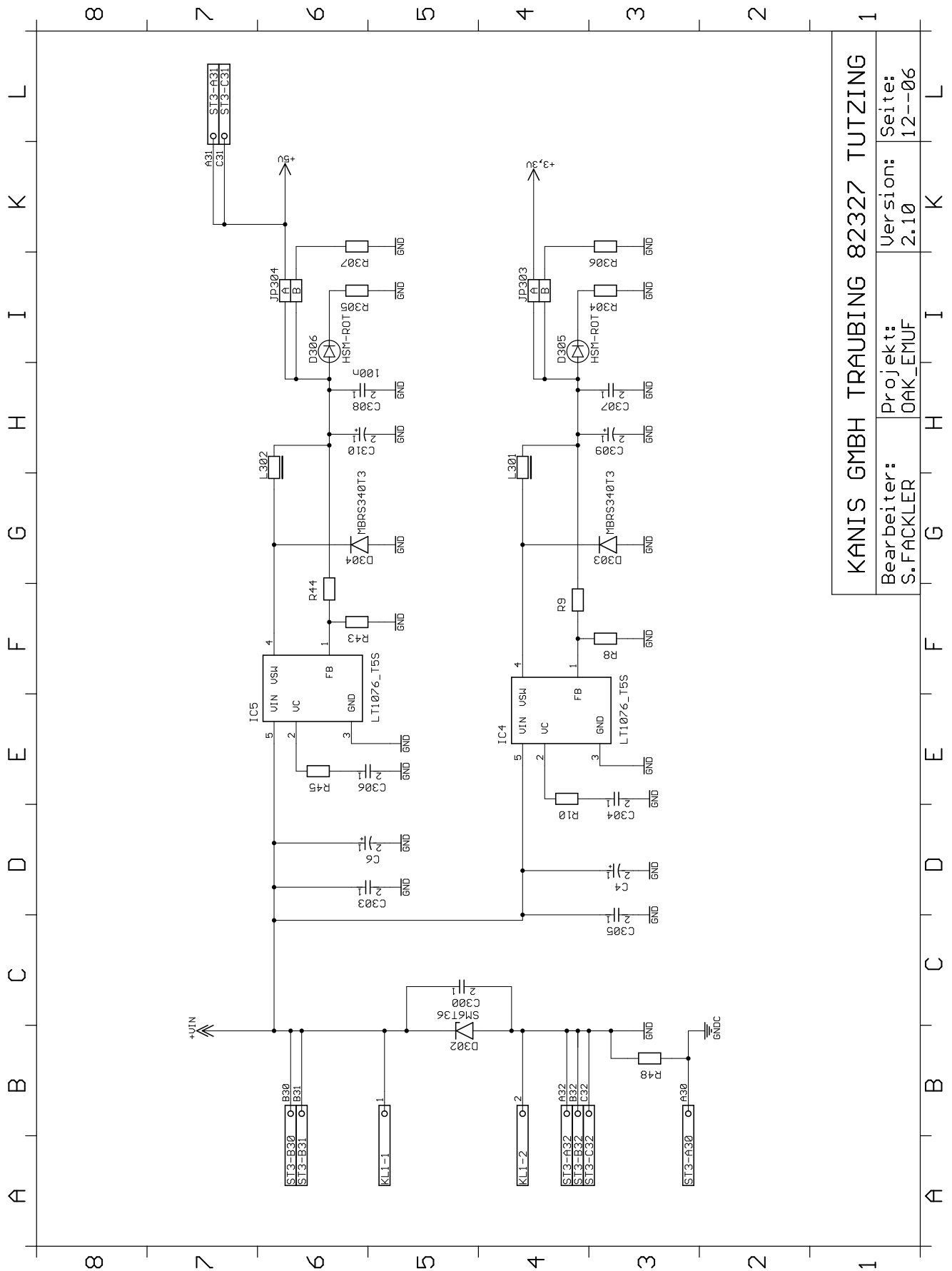


KANIS GMBH TRAUBING 82327 TUTZING
 Bearbeiter: S.FACKLER
 Projekt: OAK_EMUF
 Version: 2.10
 Seite: 12--02

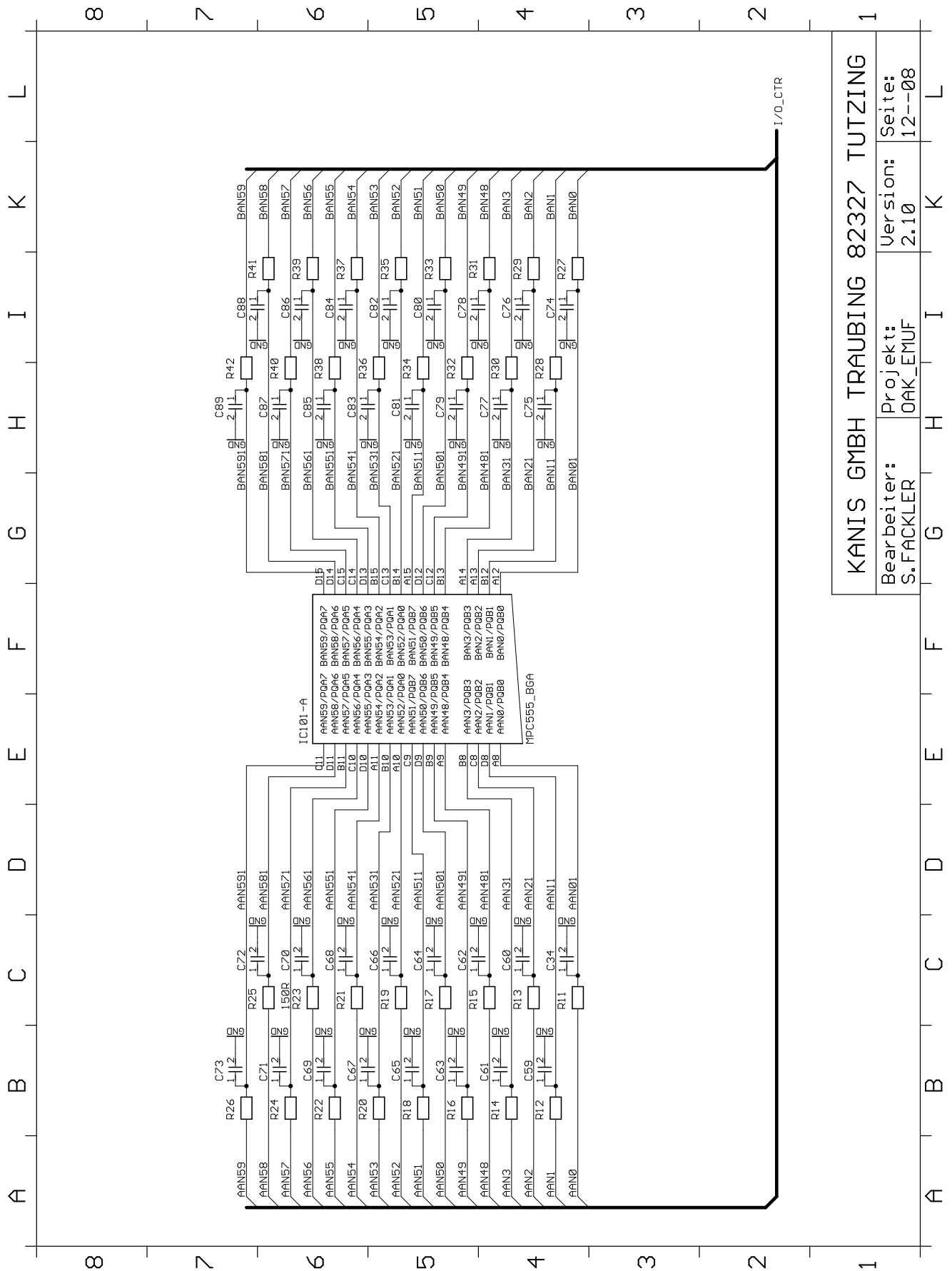


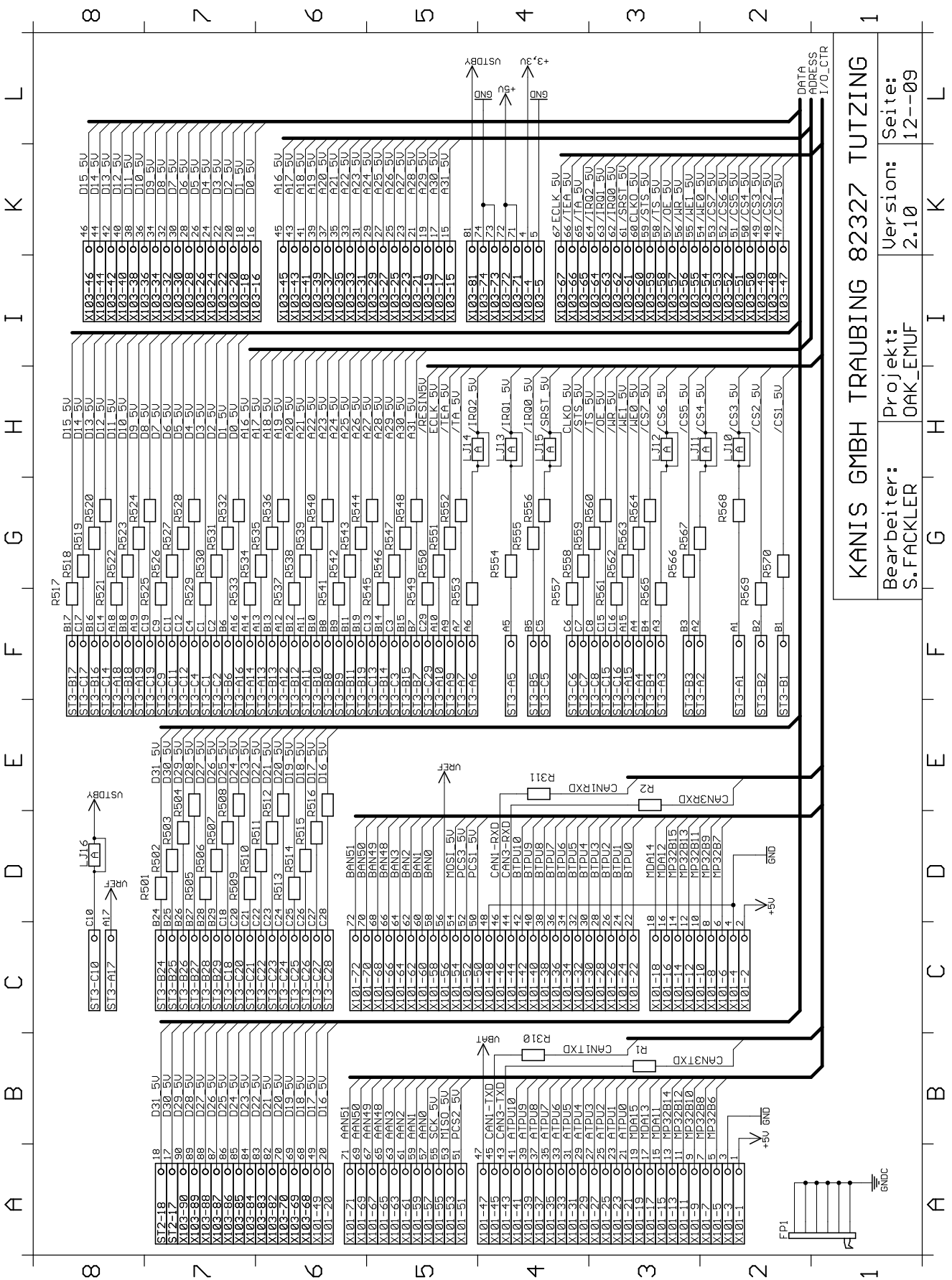
KANIS GMBH TRAUBING 82327 TUTZING

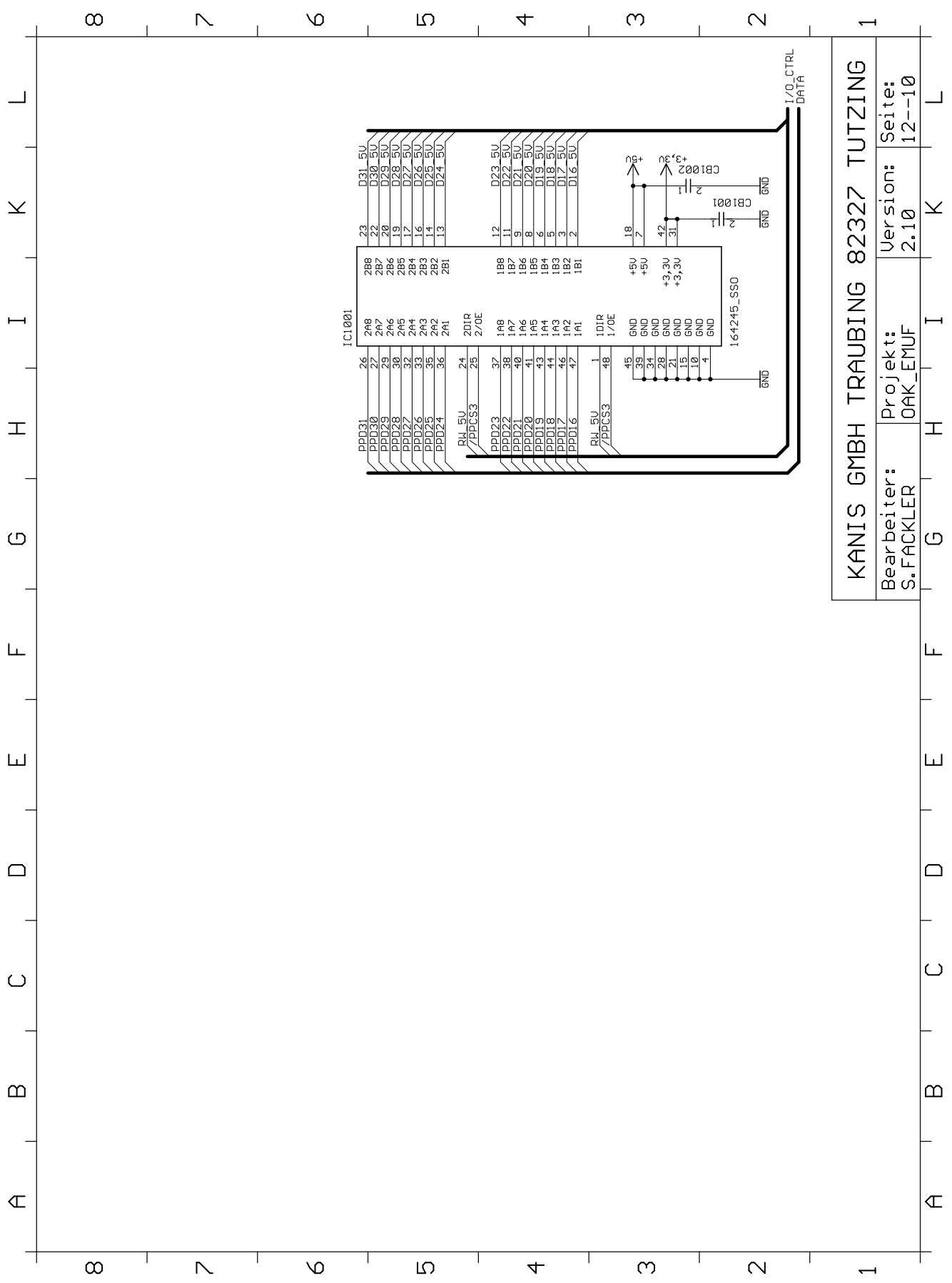
Bearbeiter: S.FACKLER
 Projekt: OAK_EMUF
 Version: 2.10
 Seite: 12--04



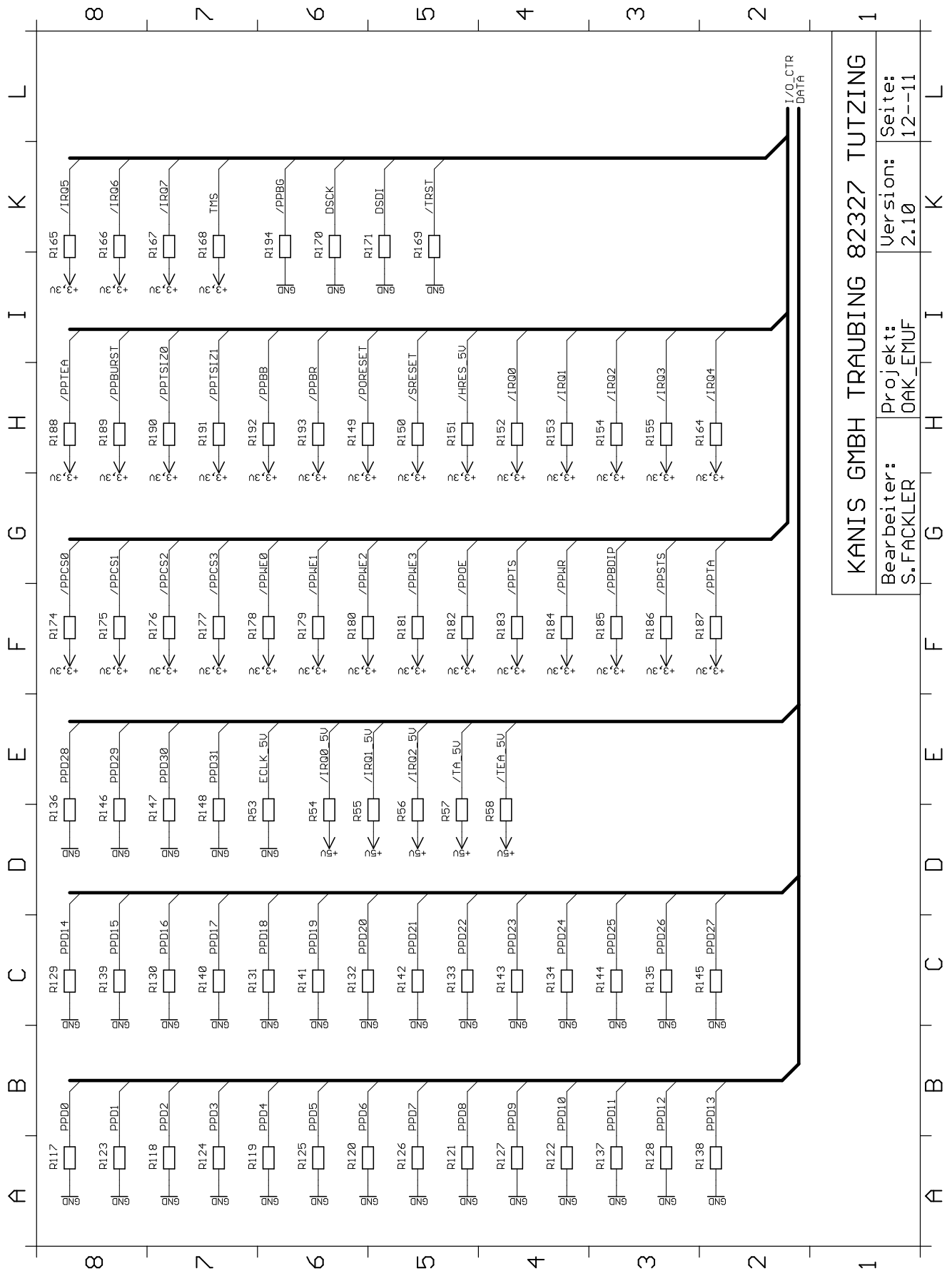
| | |
|-----------------------------------|----------------------|
| KANIS GMBH TRAUBING 82327 TUTZING | |
| Bearbeiter: S.FACKLER | Projekt: OAK_EMUF |
| Version: 2.10 | Seite: 12--06 |







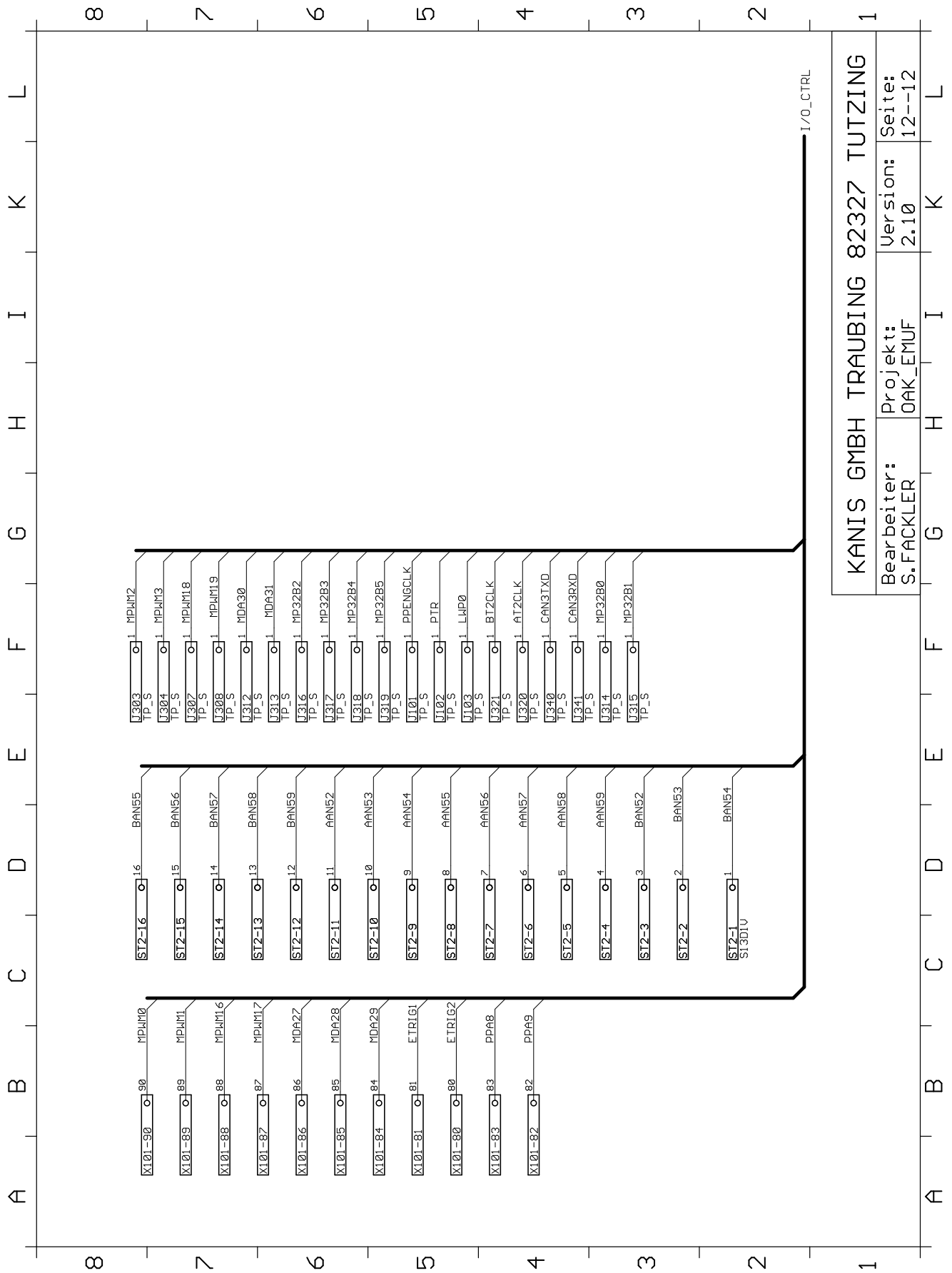
| | | | |
|--|----------------------|------------------|------------------|
| KANIS GMBH TRAUBING 82327 TUTZING | | | |
| Bearbeiter: S.FACKLER | Projekt: OAK_EMUF | Version: 2.10 | Seite: 12--10 |



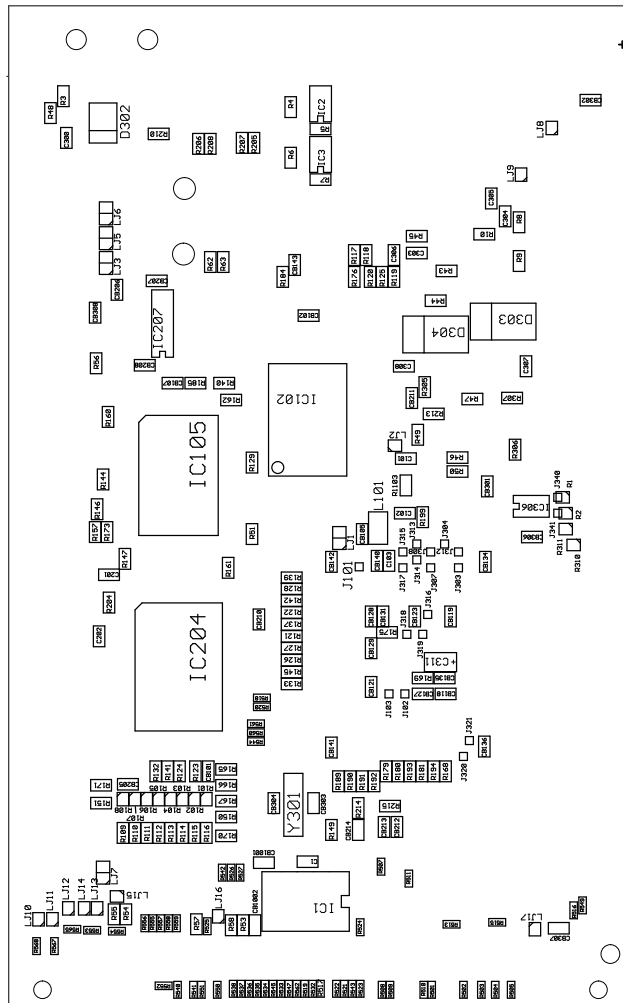
KANIS GMBH TRAUBING 82327 TUTZING

Bearbeiter: S.FACKLER
 Projekt: OAK_EMUF

Version: 2.10
 Seite: 12--11



KANIS GMBH TRAUBING
82327 TUTZING 2.10
OAK_EMUF
POSITIONSPLAN LÖTSEITE



versions, , version.txt,

I:\PJ\OAK_EMUF\HAND\

```

-----
|           Ing. Büro W.Kanis GmbH - Brückenweg 2, Traubing - D82327 Tutzing           |
|-----|
| Versionsnummern-Änderungs-Beschreibung für Projekt: OAK_EMUF                       |
|-----|
-----

```

```

=====
Eintrag durch Fackler Sepp am Fr 10.11.2000 13:40:40 an PC starr
Alte Version i:\pj\OAK_EMUF\Hand\V1_00\*. * verwendet
Neue Version i:\pj\OAK_EMUF\Hand\V1_10\*. * erstellt
Alte Version i:\pj\OAK_EMUF\Lay\V1_00\*. * verwendet
Neue Version i:\pj\OAK_EMUF\Lay\V1_10\*. * erstellt
Alte Version i:\pj\OAK_EMUF\Part\V1_00\*. * verwendet
Neue Version i:\pj\OAK_EMUF\Part\V1_10\*. * erstellt
Alte Version i:\pj\OAK_EMUF\Sch\V1_00\*. * verwendet
Neue Version i:\pj\OAK_EMUF\Sch\V1_10\*. * erstellt
Kommentar: Diverse Änderungen.
=====

```

```

=====
Eintrag durch Fackler Sepp am Fr 20.01.2001 13:40:40 an PC starr
Alte Version i:\pj\OAK_EMUF\Hand\V1_10\*. * verwendet
Neue Version i:\pj\OAK_EMUF\Hand\V2_00\*. * erstellt
Alte Version i:\pj\OAK_EMUF\Lay\V1_10\*. * verwendet
Neue Version i:\pj\OAK_EMUF\Lay\V2_00\*. * erstellt
Alte Version i:\pj\OAK_EMUF\Part\V1_10\*. * verwendet
Neue Version i:\pj\OAK_EMUF\Part\V2_00\*. * erstellt
Alte Version i:\pj\OAK_EMUF\Sch\V1_10\*. * verwendet
Neue Version i:\pj\OAK_EMUF\Sch\V2_00\*. * erstellt
Alte Version i:\pj\OAK_EMUF\Manu\V1_00\*. * verwendet
Neue Version i:\pj\OAK_EMUF\Manu\V2_00\*. * erstellt
Kommentar: Diverse Änderungen.
=====

```

```

=====
Eintrag durch Schlosser Iris am Thu 4.10.2001 15:43:02 an PC coolday
Freigabe von i:\pj\OAK_EMUF\Lay\V2_00
Kommentar: Freigabe durch Bals/Dienst/Kanis am 28.9.01
=====

```

```

=====
Eintrag durch Kanis Wolfgang am Fr 16.11.2001 9:06:06 an PC trappi
Freigabe von i:\pj\OAK_EMUF\Hand\V2_00
Freigabe von i:\pj\OAK_EMUF\Manu\V2_00
Freigabe von i:\pj\OAK_EMUF\Mech\V1_00
Freigabe von i:\pj\OAK_EMUF\Pal0\V1_00
Freigabe von i:\pj\OAK_EMUF\Part\V2_00
Freigabe von i:\pj\OAK_EMUF\Sch\V2_00
Freigabe von i:\pj\OAK_EMUF\Soft\V0_99
Freigabe von i:\pj\OAK_EMUF\Test\V0_99
Kommentar:
=====

```

```

=====
Eintrag durch Schuldes Josef am Mo 19.11.2001 16:16:55 an PC GRRR
=====

```

```

=====
Eintrag durch Fackler Sepp am Mo 17.12.2001 8:32:14 an PC starr
Alte Version i:\pj\OAK_EMUF\Hand\V2_00\*. * verwendet
Neue Version i:\pj\OAK_EMUF\Hand\V2_10\*. * erstellt
Alte Version i:\pj\OAK_EMUF\Lay\V2_00\*. * verwendet
Neue Version i:\pj\OAK_EMUF\Lay\V2_10\*. * erstellt
Alte Version i:\pj\OAK_EMUF\Part\V2_00\*. * verwendet
Neue Version i:\pj\OAK_EMUF\Part\V2_10\*. * erstellt
Alte Version i:\pj\OAK_EMUF\Sch\V2_00\*. * verwendet
Neue Version i:\pj\OAK_EMUF\Sch\V2_10\*. * erstellt
Kommentar:Änderung laut Herrn Bals.
=====

```

```

=====
Eintrag durch Fackler Sepp am Di 8.01.2002 17:21:05 an PC starr
Freigabe von i:\pj\OAK_EMUF\Sch\V2_10
Freigabe von i:\pj\OAK_EMUF\Lay\V2_10
Freigabe von i:\pj\OAK_EMUF\Part\V2_10
Kommentar: Freigabe durch Herrn Dienst, Herrn Bals.
=====

```

```

=====
Eintrag durch Schuldes Josef am Fr 25.01.2002 9:23:15 an PC GRRR
=====

```


Eintrag durch Schuldes Josef am Mo 4.02.2002 10:59:28 an PC GRRR
Alte Version i:\pj\OAK_EMUF\Manu\V2_00*. * verwendet
Neue Version i:\pj\OAK_EMUF\Manu\V2_10*. * erstellt
Kommentar: Neues Layout

>> **FG** <<